

## Chemical Process Control & Monitoring: 706C

Main panel \$30000

Custom programmed for you application

Specifications:

- PLC
- 32 Inputs 24vdc
- 32 Outputs relay
- 40A Disconnect
- 10" Color HMI
- 24 vdc power supply
- 460v-120v Transformer .750kva
- 7 each 2hp motor starter
- 1 each 2hp VDF
- PLC controlled for total automatic operation, and manual control when needed.
- Display panel for alarms and faults
- Display panel for motoring of collected data logs
- Internal modem for remote dial-in connection to PLC for remote support
- Optional dial-out modem for emergency notification
- Optional connector for sub panel addition

The pre-assembled and pre-wired packaged system has been designed to efficiently and precisely inject liquid chemical across an extensive range of applications.

Fully integrated controls provide for greater ease of operation, less maintenance and greater reliability.



Sample touch screens

**Main Menu** | Reset | RunTime: 0  
Min. 30 | BPH 0.0

Customer Name

Pump Time 0.5 Hopper	Level 60 Main Tank PPH 20	Neutral Level 75 Chemical Neutral PH 6.5
Maintenance I/O Status Controls Administrator Sensor Setup	Alarms During Cycle 3	Main Tank PPH Main Tank PPH Usc Pump PPH Trends PH Level Tank Levels
Log On	Last Time Recorded Maintenance 09/30/2010, 16:00	Log Off 120 Minutes

002/006 15:59 Air Pressure Fault

09/30/10 | Help | MUDEN STATUS: NO PORT | 04:01PM

**Chemical Containment** | ON/OFF

Process flow diagram showing: CL02 Generator, Main Tank (Level: - 500), CL02 Pump, Generator Valve, High Alarm, Neutralization Tank (Level: - 25), Transfer Valve, PH Probe (3.5), PH Measurement Pump, Drain Valve, and five Sol. tanks (Level: - 25).

Buttons: Previous | Main Analog | Manual

09/30/10 | Alarms Active | 04:06PM

- ▼ 09/30/10 15:59 Motor Overload
- 09/30/10 15:59 Air Pressure Fault
- 09/30/10 15:59 Warning Main Power turned ON 30 Sec
- 09/30/10 15:59 (ESD) Emergency Stop Melay Off
- 09/30/10 15:59 PLC Link Down
- ▲ 09/30/10 15:59 E-Stop PLC Control

PREV | NEXT | MUTE

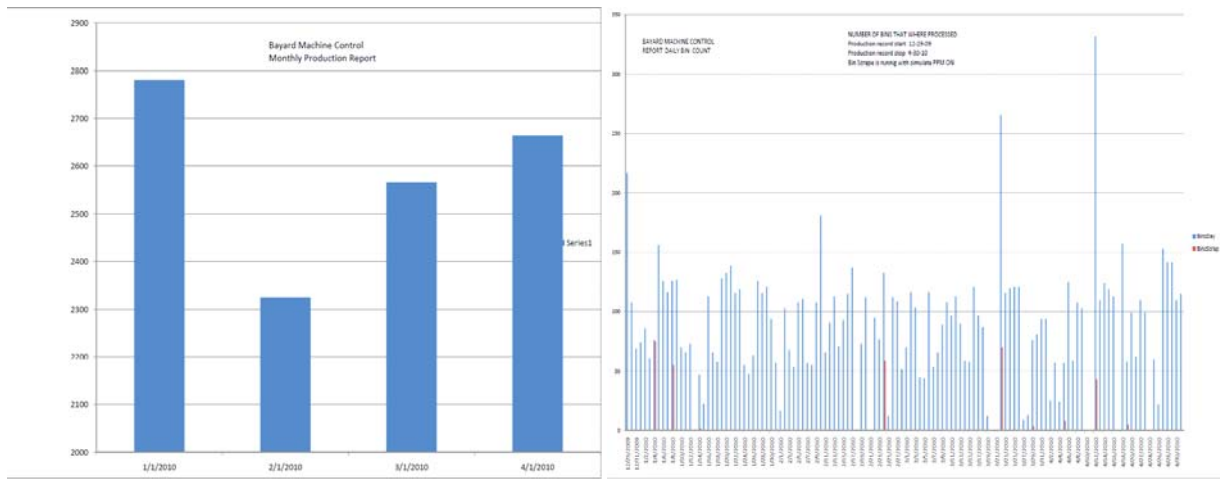
Prev. | Warnings are display only and will not shut down cycle | Event Log

**Main Tank** | ON/OFF

Process flow diagram showing: Recovery Pump, Recovery Tank (Level: - 25), Separator, Hopper Press, Hopper Screen, Sol. Reservoir, and Main Tank (Level: - 25) with PPM: - 500.

Previous

Sample modem downloaded data was formatted and sent to manager as a pdf file.



Production numbers monthly and daily

Remote sub panel optional \$5000

Specifications:

32 inputs 24vdc

32 outputs relay

16 (4-20ma) analog Inputs (tank levels and meters)

